



KAI SHINE LIGHTING & EFFECTS LTD.
2019 Product Catalogue

KAI SHINE 2019 PRODUCT CATALOGUE : About KAI SHINE

Integrity is our most fundamental and important concept.

KS keeps all the promises and must do the best.

KS is dedicated to manufacturing special effect machines over 20 years;

therefore, we are surely confident to meet all clients' needs.

KS has the top producing technology and can provide the best solution in the most efficient way.

At the same time, we ensure every product is the most reasonable price.

KS plays the role on manufacturing special effect machines,

builds up its business with high-quality standard, and stands by all clients.

As a professional effect machine manufacturer,

KS expects itself to have own business style and create the space of sustainable development.

INTEGRITY

Our mission is to become a reliable partner for long-term cooperating in the global special effect industry.

INNOVATION

Innovation, quality and execution is the source of KS' growth.

We are looking for comprehensive, covering strategy, management, technology, manufacturing and other aspects of innovations.

CUSTOMER PARTNERSHIP

Customers are our partners, so we are truly proud of customers' success.

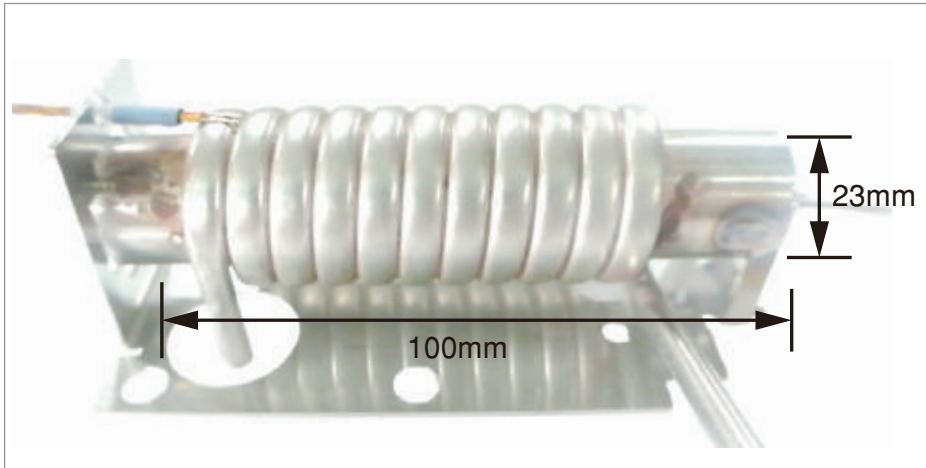
We strive to establish a deep relationship with our customers and become a trusted and important partner for long-term.



TEL : + 886-3-323-0927
Fax : + 886-3-323-8245
Web : www.ksfog.com
E-mail : ping@ksfog.com

MICRO HEATING PIPE

KAI SHINE 2019 PRODUCT CATALOGUE : Micro heating pipe



1. LFA series all use micro heating pipes which are made by seamless technology with stainless steel 316 from Japan ; its smooth surface is durable and won't have any residues.
2. LFA series make smoke that is different from traditional ones. It combusts 100% of the liquid , the smoke is dry and low temperature and it will not cause performers any uncomfortable. It has been appointed in many major concerts and indoors.
3. The all-new structure control technology of LFA series has linear output. From 1% to 100%, the output is smooth without the problem of tremble.
4. Micro heating pipes of LFA series are a whole new technology with a guarantee of never clogged and won't have any smells which are caused by incomplete burning.

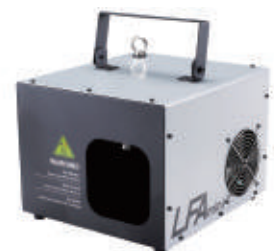
LFA Natural Smoke Series



LFAT



LFAT2



LFAMini



LFAM1

LFAT

LFA Natural Smoke Series - LIGHT FOG ART TURBO LFAT

Its micro heating pipe is able to combust 100% of liquid. Combining with KS designed fan, LFAT is extremely quiet and can spread the fog out strongly and widely in any performance.

KAI SHINE 2019 PRODUCT CATALOGUE : LFAT FOG & HAZE MACHINE



Output(cu.ft/min) :	38000cu.ft/min	Recommended liquid :	LFA-6L/6AL/6C
Power consumption :	1700W	Liquid consumption :	50min/Liter(100% output)
Pre-heating time :	40sec	DMX :	On Board 3pin/5pin in/out
Weight :	20.3kg	Dimensions :	L555mmxW275mmxH420mm
Color :	Black	Voltage :	AC100V/120V/240V ; 50HZ/60HZ
Tank capacity :	6 Liter (disposable)	Controller :	Built-in Blue OLED Panel Digital Controller

Front view	LFAT IN FLIGHT CASE	Recommended Liquid
		<div> LFA-6L LFA-6AL LFA-6C </div>

LFAT2

LFA Natural Smoke Series - LIGHT FOG ART TURBO LFAT
LFAT2 is the new generation of LFA series. It keeps all advantages of LFAT. LFAT2 micro heating pipe is with a guarantee of never clogged and can combust 100% of liquid without any waste. The operating system is simpler and more friendly for the users.

KAI SHINE 2019 PRODUCT CATALOGUE : LFAT2 FOG & HAZE MACHINE



Output(cu.ft/min) :	36000cu.ft/min	Recommended liquid :	LFA-6L/6AL/6C
Power consumption :	1500W	Liquid consumption :	60min/Liter (100% output)
Pre-heating time :	46sec	DMX :	On Board 3pin/5pin in/out
Weight :	17.9kg	Dimensions :	L555mm×W275mm×H420mm
Color :	Black	Voltage :	AC100V/120V/240V ; 50HZ/60HZ
Tank capacity :	6 Liter (disposable)	Controller :	Built-in LED Panel Digital Controller

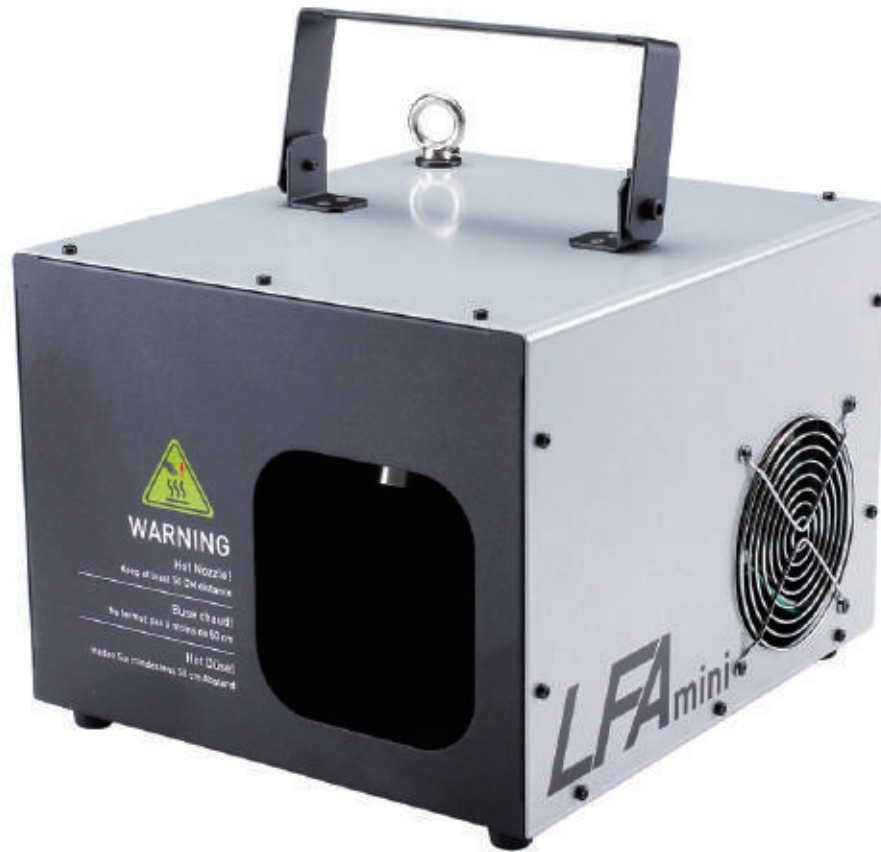
Front view	LFAT IN FLIGHT CASE	Recommended Liquid
		 <div> LFA-6L LFA-6AL LFA-6C </div>

LFAmini

LFA Natural Smoke Series - LIGHT FOG ART MINI

LFAmini is the ultimate reversion small-sized fog and haze machine. LFA series not only represent KS spirit of hard-working, but also bring fog and haze machine into a whole new level. LFAmini has the effect of fog and the output of bigger hazer. It is the No.1 model of small fog and haze machine.

KAI SHINE 2019 PRODUCT CATALOGUE : LFAmini FOG & HAZE MACHINE



Output(cu.ft/min) :	32000cu.ft/min	Recommended liquid :	LFA-1L/6L/6AL/6C
Power consumption :	1600W	Liquid consumption :	60min/Liter (100% output)
Pre-heating time :	40sec	DMX :	On Board 3pin/5pin in/out
Weight :	9kg	Dimensions :	L322mm×W288mm×H323mm
Color :	Silver	Voltage :	AC100V/120V/240V ; 50HZ/60HZ
Tank capacity :	1 Liter (disposable)	Controller :	Built-in LED Panel Digital Controller & Remote

Front view	Recommended Liquid	Built-in REMOTE
	 <div> LFA-1L LFA-6L LFA-6AL LFA-6C </div>	

LFAM1

LFA Natural Smoke Series - LIGHT FOG ART MINI 1

It's the deluxe version of LFAMini. LFAM1 also, combining with KS designed fan, LFAM1 not only is extremely quiet but spreads fog out widely and strongly. It is suitable for any places. KS makes efforts on showing perfect lighting effect in every condition.

KAI SHINE 2019 PRODUCT CATALOGUE : LFAM1 FOG & HAZE MACHINE



Output(cu.ft/min) :	35000cu.ft/min	Recommended liquid :	LFA-6L/6AL/6C
Power consumption :	1400W	Liquid consumption :	60min/0.85Liter (100% output)
Pre-heating time :	46sec	DMX :	On Board 3pin/5pin in/out
Weight :	11.9kg	Dimensions :	L343mm×W364mm×H290mm
Color :	Black	Voltage :	AC100V/120V/240V ; 50HZ/60HZ
Tank capacity :	6 Liter (disposable)	Controller :	Built-in LED Panel Digital Controller

Side view	Side view	Recommended Liquid
		<div> LFA-6L LFA-6AL LFA-6C </div>

SPECIFICATIONS OF LFA SERIES

KAI SHINE 2019 PRODUCT CATALOGUE : Specifications of LFA Natural Smoke Series

Item				
Output (cu.ft/min)	38000cu.ft/min	36000cu.ft/min	32000cu.ft/min	35000cu.ft/min
Power consumption	1700W	1500W	1600W	1400W
Pre-heating time	40sec	46sec	40sec	46sec
Weight	20.3kg	17.9kg	9kg	11.9kg
Color	Black	Black	Silver	Black
Tank capacity	6 Liter (disposable)	6 Liter (disposable)	1 Liter (disposable)	6 Liter (disposable)
Recommended liquid	LFA-6L/6AL/6C	LFA-6L/6AL/6C	LFA-1L/6L/6AL/6C	LFA-6L/6AL/6C
Liquid consumption	50min/Liter (100% output)	60min/Liter (100% output)	60min/Liter (100% output)	60min/0.85Liter (100% output)
DMX	On Board 3pin/5pin in/out			
Dimensions	L555mm×W275mm ×H420mm	L555mm×W275mm ×H420mm	L322mm×W288mm ×H323mm	L343mm×W364mm ×H290mm
Voltage	AC 100V/120V/240V ; 50HZ/60HZ			
Controller	Built-in Blue OLED Panel Digital Controller	Built-in LED Panel Digital Controller	Built-in LED Panel Digital Controller & Wireless Controller	Built-in LED Panel Digital Controller

N6 FAN

N6 Fan can spread out any special fog or haze rapidly during performance. The design is simple and elegant. During the max output , the wind can spread up 21 meters far. Futher more, it works with fog, haze, snow and bubble machine well, and it allows special effect to reach higher and further places.

KAI SHINE 2019 PRODUCT CATALOGUE : N6 NATURAL WIND FAN



Power consumption :	90W	Max output :	56 m³/min
Fan diameter :	310mm	Fan hanger :	for floor and hanging usage
Fan adjustable angle :	Up to 180°	DMX :	On Board 3pin/5pin in/out
Air volume control :	1%~100% adjustment	Dimensions :	L350mm×W390mm×H530mm
Weight :	8.5kg	Voltage :	AC100V/120V/240V ; 50HZ/60HZ
Color :	Black	Controller :	Remote
Max distance :	21m		

Side view



Side view



Built-in REMOTE



N8 FAN

The simple and elegant designed of N8 Fan allows fog and haze to be speard out fairly and rapidly. During the max output, the wind can spread up to 27meters far. Futher more, it works with fog, haze, snow and bubble machine well, and it allows special effect to reach higher and further places.

KAI SHINE 2019 PRODUCT CATALOGUE : N8 NATURAL WIND FAN



Power consumption :	400W	Air flow :	2500m ³ /hr
Fan diameter :	310mm	Wind speed :	8000m/hr
Fan adjustable angle :	Up to 180°	Fan hanger :	for floor and hanging usage
Air volume control :	1%~99% adjustment	DMX :	On Board 3pin/5pin in/out
Weight :	8.5kg	Dimensions :	L350mm×W390mm×H530mm
Color :	Black	Voltage :	AC100V/120V/240V ; 50HZ/60HZ
Fan speed :	2800/min	Controller :	built-in wireless remote

Side view



Side view



Built-in REMOTE



N8iW

The simple and elegant designed of N8iW Fan allows winds to circulate. During the max output, the wind can spread up to 27meters far. It's energy saving with high performance and versatile.

KAI SHINE 2019 PRODUCT CATALOGUE : N8iW NATURAL WIND FAN



Power consumption :	400W	Air flow :	2500m ³ /hr
Fan diameter :	310mm	Wind speed :	8000m/hr
Fan adjustable angle :	Up to 180°	Fan hanger :	for floor and hanging usage
Air volume control :	1%~99% adjustment	DMX :	N/A
Weight :	8.5kg	Dimensions :	L350mm×W390mm×H530mm
Color :	Black	Voltage :	AC100V/120V/240V ; 50HZ/60HZ
Fan speed :	2800/min	Controller :	built-in wireless remote

Side view



Side view



Built-in REMOTE



HY1200

The power of HY1200 has been adjusted by KS newest technology, so the output can be compared with the effect of 1500W machine. Combining with KS fog liquid, it makes clean and odorless smoke for your stage. The unique new function which can stop smoke immediately. Also the remote control and the timer LF digital controller allow you to accurately control the strength and timing of smoke output to make your performance be perfect.

KAI SHINE 2019 PRODUCT CATALOGUE : HY1200 FOG MACHINE



Power consumption :	1200W	Tank capacity :	2.3 Liter
Pre-heating time :	11min30sec	Recommended liquid :	HFR-4,HF-4L/4C,LFA-6L/6AL/6C
DMX :	On Board	Liquid consumption :	90cc/min (100% output)
Weight :	14.5kg	Dimensions :	L512.7mm×W288mm×H313mm
Color :	Gray	Controller :	Remote/LF digital remote
Voltage :	AC100V/120V/240V ; 50HZ/60HZ		

Side view	Recommended Liquid	Remote / LF Digital Remote
	 HFR-4 HF-4L HF-4C LFA-6L LFA-6AL LFA-C	 LF DIGITAL REMOTE

HY1700

The power of HY1700W has been adjusted by KS newest technology, so the output can be compared with the effect of 2500W machine. Around 25% electricity is saved due to high efficient power control system allowing the fogger to operate at low-level temperature. Combining with KS fog liquid, it makes clean and odorless smoke for your stage. Deal for very large venues, both indoor and outdoor event, movie production or for fire training concept.

KAI SHINE 2019 PRODUCT CATALOGUE : HY1700 FOG MACHINE



Power consumption :	1700W	Recommended liquid :	HFR-4,HF-4L/4C,LFA-6L/6AL/6C
Pre-heating time :	380sec	Liquid consumption :	120cc/min (100% output)
Re-heating time :	28sec	DMX :	On Board 3pin/5pin in/out
Weight :	15.8kg	Dimensions :	L680mm×W283.5mm×H293mm
Color :	Gray	Voltage :	AC100V/120V/240V ; 50HZ/60HZ
Tank capacity :	6 Liter (disposable)	Controller :	Remote

Side view	Recommended Liquid	Built-in REMOTE
	 HFR-4 HF-4L HF-4C LFA-6L LFA-6AL LFA-C	

A250EF

A250EF can make professional haze effects for the stage and meet the customer's needs. With KS designed haze liquid, KS guarantees that it is harmless for human. After performance, it will not residue any oil to protect every machine on the stage and make the performance more even better.

KAI SHINE 2019 PRODUCT CATALOGUE : A250EF HAZE MACHINE



Output(cu.ft/min) :	2800cu.ft/min	Liquid consumption :	32 HR /Liter
Power consumption :	350W	DMX :	N/A
Weight :	13.5kg	Dimensions :	L440mm×W263mm×H250mm
Color :	Black	Voltage :	AC100V/120V/240V ; 50HZ/60HZ
Tank capacity :	2.3Liter (disposable)	Controller :	A250 Digital Remote
Recommended liquid :	HZL-1		

Side view

Side view

Recommended Liquid



HZL-1

A550EF

A550EF is desiccation, stable and quiet ; only 36db while executing. Its features are with OLED controlling board and both 3pin and 5pin DMX. A550EF is designed with the luxury and durable flight case; it also provides an intelligent storage and good protection from damage during the process of delivery.

KAI SHINE 2019 PRODUCT CATALOGUE : A550EF HAZE MACHINE



Output(cu.ft/min) :	4500cu.ft/min	Liquid consumption :	21 HR /Liter
Power consumption :	600W	DMX :	On Board 3pin/5pin in/out
Weight :	31kg	Dimensions :	L525mmxW420mmxH340mm
Color :	Black	Voltage :	AC100V/120V/240V ; 50HZ/60HZ
Tank capacity :	2.3Liter (disposable)	Controller :	Built-in OLED panel digital controller
Recommended liquid :	HZL-1		

Side view



Control Panel



Recommended Liquid



HZL-1

SPECIFICATIONS OF Fog / Haze Machine

KAI SHINE 2019 PRODUCT CATALOGUE : Specifications of HY1200/1700 ; A250EF/A550EF/A750EF

Item				
Power consumption	HY1200 1200W	HY1700W 1700W	A250EF 350W	A550EF 600W
Output (cu.ft/min)	N/A		2800cu.ft/min	4500cu.ft/min
Pre-heating time	11min30sec	380sec	N/A	
Re-heating time	N/A	28sec	N/A	
Weight	14.5kg	15.8kg	13.5kg	31kg
Color	Gray		Black	
Tank capacity	2.3 Liter	6 Liter (disposable)	2.3Liter (disposable)	2.3Liter (disposable)
Recommended liquid	HFR-4,HF-4L/4C, LFA-6L/6AL/6C		HZL-1	
Liquid consumption	90cc/min (100% output)	120cc/min (100% output)	32 HR /Liter	21 HR /Liter
DMX	On Board 3pin in/out	On Board 3pin/5pin in/out	N/A	On Board 3pin/5pin in/out
Dimensions	L512.7mm×W288mm ×H313mm	L680mm×W283.5mm ×H293mm	L440mm×W263mm ×H250mm	L525mm×W420mm ×H340mm
Voltage	AC100V/120V/240V ; 50HZ/60HZ			
Controller	Remote /LF digital remote	Wireless Remote	A250 Digital Remote	Built-in OLED panel digital controller

SSW

SSW Snow Machine can make large amounts of snowflake effects to create more dramatic ambience for the stage. Using KS professional Snow & Foam Liquid won't make the floor slippery and easy to clean it. Also with a simple control panel to adjust customer requests, it can make effects and qualities even better.

KAI SHINE 2019 PRODUCT CATALOGUE : SSW SNOW MACHINE



Output(cc/min) :	285cc / min	Recommended liquid :	SL-4
Power consumption :	280W	Liquid consumption :	285cc / min
Weight :	16.3kg	Tank capacity :	4 Liter (disposable)
Color :	Silver	Dimensions :	L412mmxW351mmxH232mm
DMX :	On Board 3pin/5pin in/out	Voltage :	AC100V/120V/240V ; 50HZ/60HZ
Controller :	Remote		

Side view	Built-in REMOTE	Recommended Liquid
		 SL-4

LFA LIQUID

KAI SHINE 2019 PRODUCT CATALOGUE : HIGH QUALITY SPECIAL LIQUID LFA SERIES

KS high quality special liquid is suitable for all series of LFA products, and also for other brands of high-level fog machines. Also, it is 100% natural without chemical composition. Output is completely odorless and compatible with water without damaging the environment. It also protects machines. All series of KS high quality special liquid have got the national safety report; SGS and Material Safety Data Sheet (MSDS).



LFA-1AL / 4AL / 6AL Concentration : ★★★★★ Water Base

It is specially designed for LFA series. It creates an extremely dense and stable white fog with very long standing time and an excellent reflective performance. It is specially formulated for open-air activities.

It is available in these sizes : LFA-1AL/4AL/5AL/6AL(Liters).



LFA-1L / 4L / 6L Concentration : ★★★★★☆ Water Base

It is specially designed for LFA series. Due to its excellent reflective capability, ideal for spectacular light and laser shows, it is suitable for all common occasions and creates a particularly dense and long lasting white fog.

It is available in these sizes : LFA-1L/4L/5L/6L(Liters).



LFA-1C / 4C / 6C Concentration : ★★★★★☆ Water Base

It is specially designed for LFA series, It has medium fog density with medium standing time, is suitable for indoor activities and benefits from its ability to reflect sophisticated lighting designs.

It is available in these sizes : LFA-1C/4C/5C/6C(Liters).

HZL/HF LIQUID

KAI SHINE 2019 PRODUCT CATALOGUE : HIGH QUALITY SPECIAL LIQUID HF&HZL SERIES

KS high quality special liquid is suitable for all series of LFA products, and also for other brands of high-level fog machines. Also, it is 100% natural without chemical composition. Output is completely odorless and compatible with water without damaging the environment. It also protects machines. All series of KS high quality special liquid have got the national safety report; SGS and Material Safety Data Sheet (MSDS).



HZL-1

Oil Base

It is special oil-based haze liquid, can produce translucent pure haze. It has long lasting and low moisture content.

It is available in these sizes : HZL-1/4/5/6(Liters).



HF-4L

Concentration : ★★★★★

Water Base

It is ideal for open-air areas. It creates high dense odorless and non-toxic fog with long standing time. It is water-based and has high transparency.

It is available in these sizes : HF-4L/5L(Liters).



HF-4C

Concentration : ★★★☆☆

Water Base

It is water-based liquid with high transparency and odorless fog. It generates a medium smoke density with medium standing time; it is also perfect for indoor and outdoor activities.

It is available in these sizes : HF-4C/5C(Liters).



HFR-4

Concentration : ★★★☆☆

Water Base

It creates very dense white fog a very short standing time, is water-based, odorless and non-toxic. It is nicely used for indoor activities, clubs, concerts, bars and so on.

It is available in these sizes : HFR-4/5(Liters).

SL-4 KS SNOW & FOAM LIQUID

For all these years, KS has insisted on using only renewable material to present unarmful product for the clients. KS Snow & Foam Liquid prevents the common problems of traditional snow liquid, which the pump will be corroded while using. It also has been proven by SGS that it is PH6.6, will not corrodes pump and not cause uncomfortable either while touching. You can get the best effect with every brand of snow machine.

KAI SHINE 2019 PRODUCT CATALOGUE : SL-4 Snow & Foam Liquid



NATURAL MATERIAL FOR NATURAL PERFORMANCE

KS Snow & Foam Liquid is designed for using in any snow machine. Because of no added artificial chemical materials, snowflake is white, odorless and can make perfect effects.

PERFECT COMBINATION OF NATURE AND TECHNOLOGY

Snowflakes fall from the sky slowly, just like real snow. It is the most amazing to disappear without any residue in your hands instantly when touching. Enjoy the atmosphere in any conditions.

KS Snow & Foam Liquid is available in these sizes : SL-4, SL-5, SL-6, and SL-20 (Liters).

BL-4 KS BUBBLE LIQUID

Generating the machine with traditional bubble liquid will make floor slippery, cause some residues on the clothes and make lots of foam. After using the machine, it has to be cleaned up to prevent clogging. However, using KS Bubble Liquid won't cause these results again.

KAI SHINE 2019 PRODUCT CATALOGUE : BL-4 Bubble Liquid



ALL NATURAL INGREDIENTS MEETS ADVANCED TECHNOLOGY.

All KS products are developed and manufactured in Taiwan. Our newest technology combines with medical skin care research. With certification of SGS which approves it is PH7.7, KS Bubble Liquid can protect all users with sensitive skin.

BEGINNING WITH A WHOLE NEW GENERATION OF SPECIAL EFFECT AND ENVIRONMENT.

By using KS Bubble Liquid, it can show the best effect with every brand of bubble machine. It neither needs to clean the machine nor empties the rest of bubble liquid after using KS Bubble Liquid.

KS BUBBLE LIQUID WILL EVAPORATE NATURALLY WITHOUT SOLIDIFY.

KS Bubble Liquid is ensured to make lots of bubbles every time and will not have any residue after using it. Because KS Bubble Liquid is made by natural ingredient with PH7.7, unlike other bubble liquid will volatile and damage the machine.

KS Bubble Liquid is available in these sizes: BL-4, BL-5, and BL-6 (Liters).

ACCESSORIES

KAI SHINE 2019 PRODUCT CATALOGUE : Accessories



LFA DIGITAL REMOTE

Effective distance :	About 50 meters
Function :	Adjustable switch on/off
Compatible with :	N6, SSW, LFAmini



DIGITAL REMOTE

Effective distance :	About 50meters
Function :	1. Adjustable switch on/off 2. Adjust the output volume.
Compatible with :	N8, N8iW, HY1200, HY1700W



LF DIGITAL REMOTE

Cable length :	10 feet
Connector :	6-pin
Function :	1. Set the output space and duration timing. 2. Continuous output. 3. Adjust the output volume.
Compatible with :	HY1200



A250EF DIGITAL REMOTE

Cable length :	10 feet
Connector :	3-pin
Function :	1. Set the output space and duration timing. 2. Continuous output.
Compatible with :	A250EF



AIR DUCT FOR DNG EFFECT

Length :	10 feet
Diameter :	4 inches
Function :	Using sectional pipe in difference occasions can create low fog effects on the floor.
Compatible with :	LFAT, LFAT2,



TEL : + 886-3-323-0927
FAX : + 886-3-323-8245
WEB: www.ksfog.com
E-mail : ping@ksfog.com